

OceanLink - 7" TFT Display

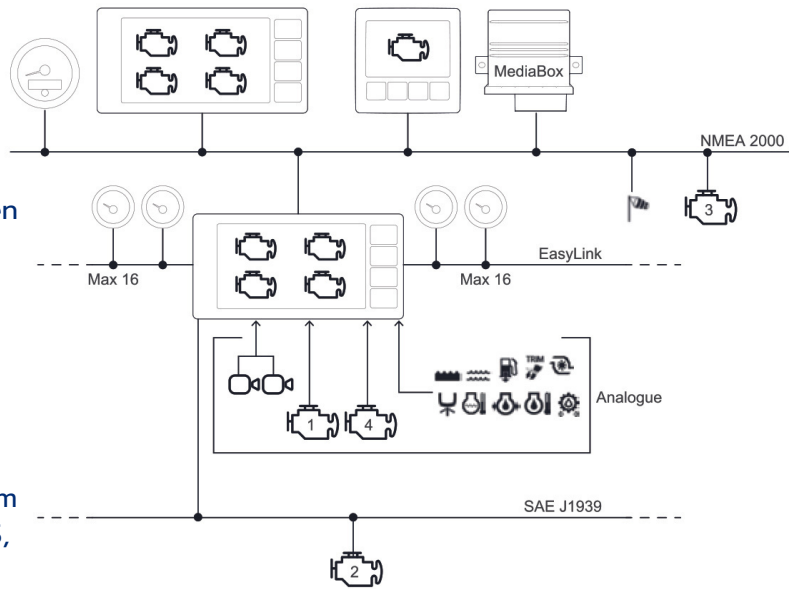


Description

OceanLink Master 7" is a multifunction display that lets you monitor engines and related sensor parameters.

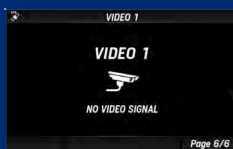
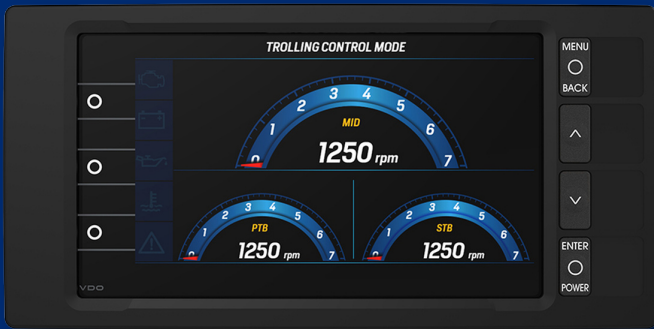
- Up to four engines can be connected to the display.
- The integrated NMEA 2000 gateway lets you acquire engine data also via analog signals or SAE J1939, to then convert and distribute them on NMEA 2000 network.
- The display manages up to six resistive sensors, three voltage sensors and one digital alarm.
- All data are also distributed on two EasyLink channels
- to a maximum of 16 52mm OceanLink gauges per channel.

NMEA 2000 connectivity lets you view navigation data from other devices on the network, such as wind, compass, GPS, speed and depth data.



Specifications

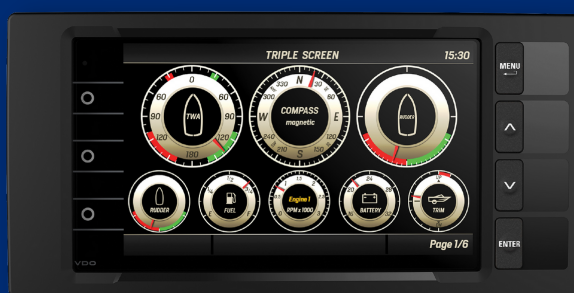
- Touch screen function
- Optical bonded mineral glass lens
- Front & rear side protection rating IPX76
- 1x NMEA 2000® connector
- 2x J1939
- 6x Analog input
- 2x Frequency input
- 2x 4-20 mA
- 3x Digital input or 0-5 V
- 2x Alarm output
- 2x Video input
- 2x EasyLink data output
- 2x Programmable alarm output 500 mA
- Operating temperature range -20 °C / +70 °C



Multiple

Customizable

Layouts



Official distributor



+30 22920 25606

www.amz-yachting.com

info@amz-yachting.com